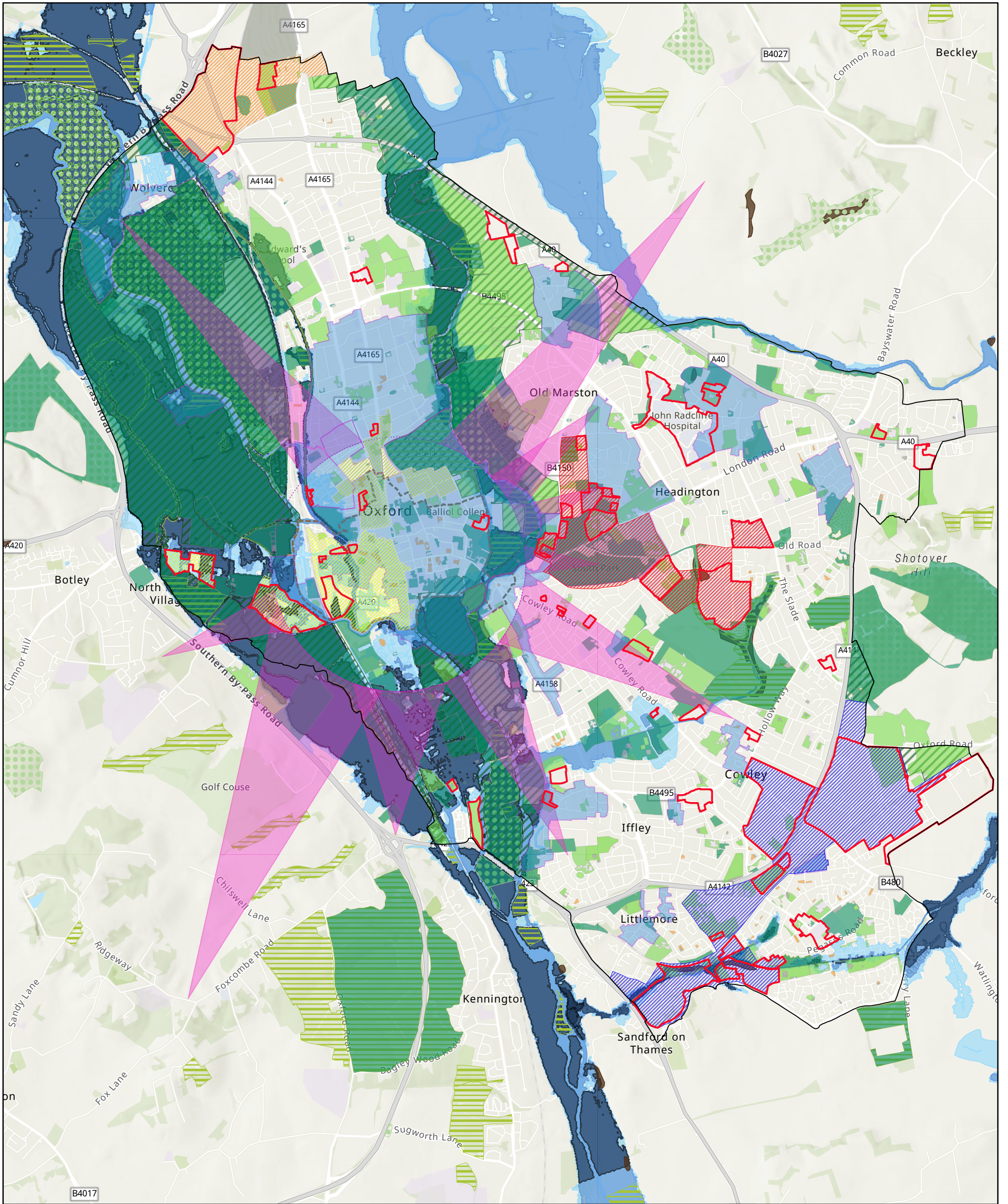


DRAFT Oxford Local Plan Policies Map - 2



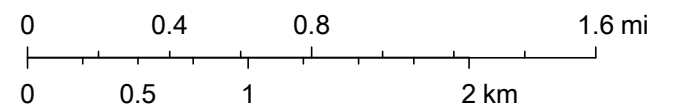
21/09/2023

- Oxford City Boundary
- Site Allocations OLP2040
- OLP 2040 Areas of Focus**
- Cowley Branch Line and Littlemore Area of Focus
- Marston Road and Old Road Area of Focus
- North of the City Centre AOF
- Northern Edge of Oxford Area of Focus
- West End and Botley Area of Focus

- HD1 Conservation Areas
- HD5 City Centre Archaeological Area
- HD9 Historic Core Area
- HD9 View Cones
- G1 Green Infrastructure
- Core
- Supporting
- N/A

- Other Spaces
- G6 Local Wildlife Sites
- Oxford Green Belt
- G6 Special Areas of Conservation
- G6 Oxford City Wildlife Sites
- G6 Sites of Special Scientific Interest
- R6 Peat Reserves
- 569 Flood Zone 3b

1:55,238



Esri, Intermap, NASA, NGA, USGS, Esri UK, Esri, HERE, Garmin, Foursquare, GeoTechnologies, Inc, METI/NASA, USGS

This page is intentionally left blank